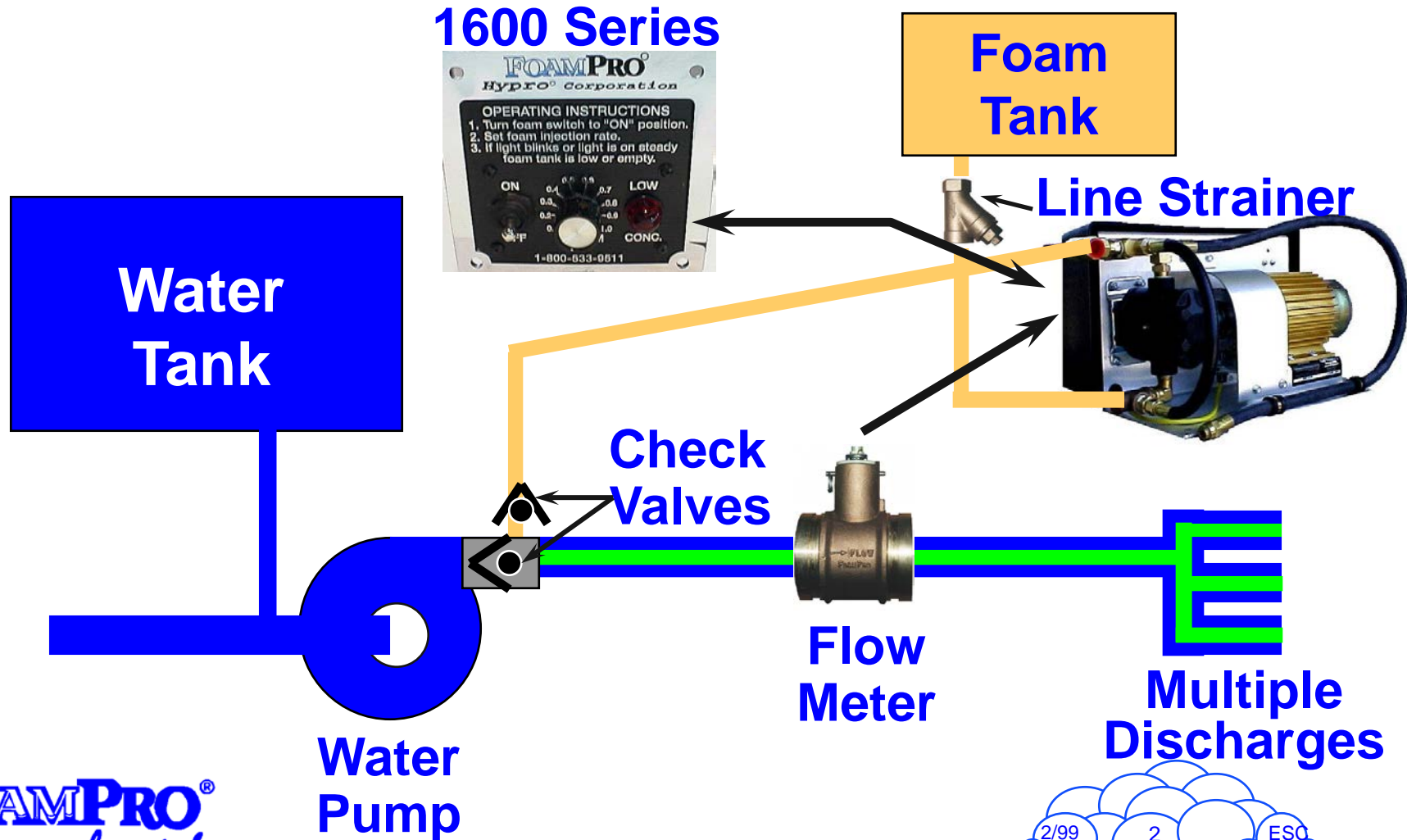
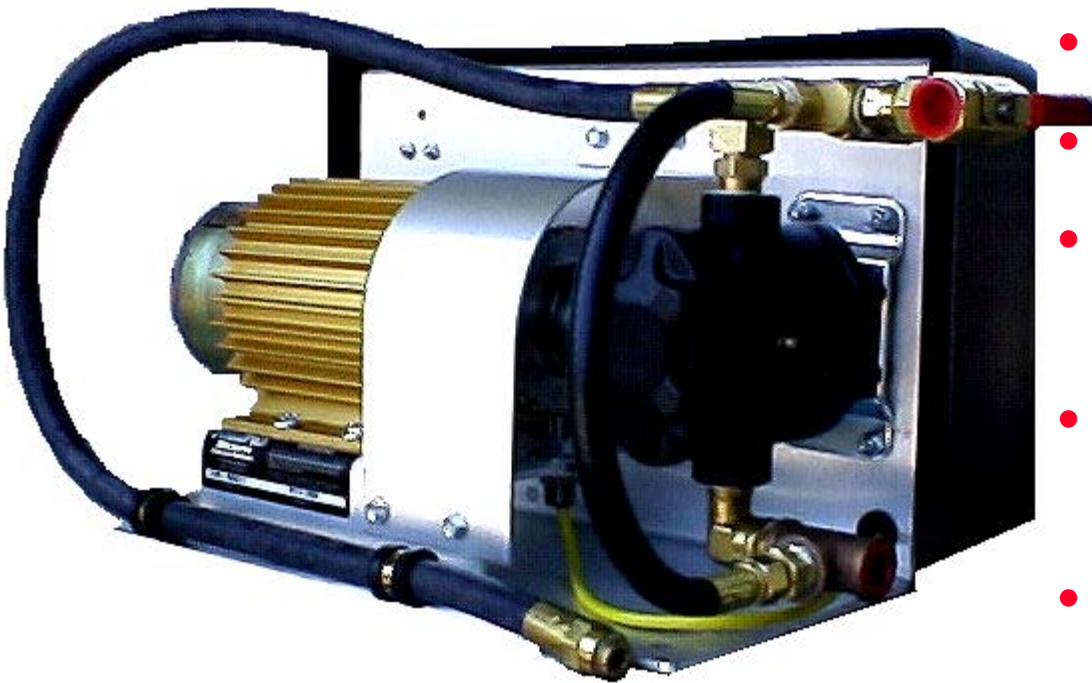

FoamPro 1600 Series Operational Training

FoamPro Electronic Direct Injection Proportioner



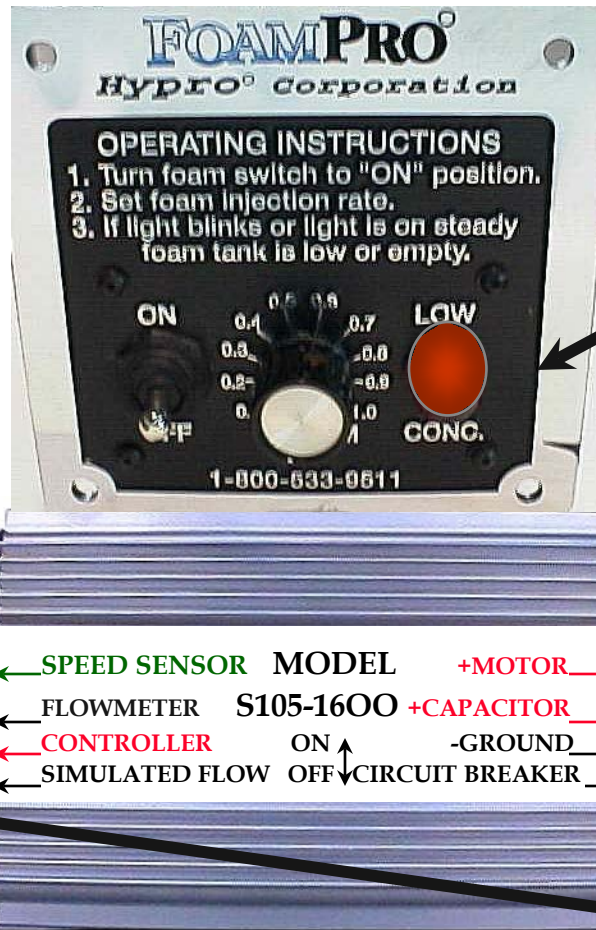
Hypro - FoamPro 1600 Series



- Fully Automatic
- Class A Foam ONLY
- Proportioning Between 0.1% to 1% .
- Standard with 1", 1 1/2" or 2" Flowmeter Tee.
- Operators Control Panel:

Hypro - FoamPro

1600 Series Features & Operations



- **1600 Series Controller**

- Operating Instructions
- Low concentrate light

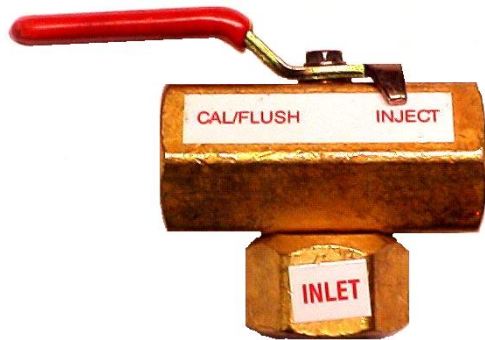
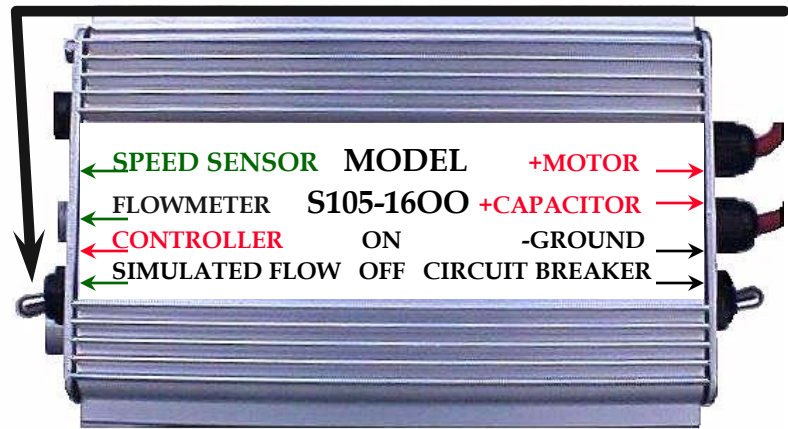
- Light blinks then goes out = System ready to operate
- 1 blink per second = Low Concentrate.
- Solid light = No Concentrate.
- 5 blinks per second = Electrical Error

- **1600 Series Motor Driver Box**

- Circuit breaker - Normal Operation "UP"
- Simulated flow - Normal Operation "Down"

Hypro - FoamPro

Purging Air From 1600 Series Foam Pump



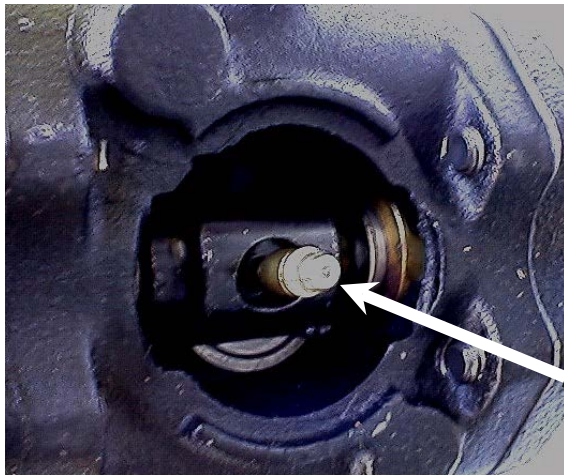
- Enter Simulated Flow mode.
- Turn Cal/Inject valve to Cal/Flush.
- Turn switch on the control panel to the “**ON**” position to run foam pump.
- Run until foam concentrate is flowing steadily out the dump line.
- Turn the switch “**OFF**” on the control panel to stop foam pump.
- Turn Cal/Inject valve back to INJECT.
- Exit Simulated Flow mode.

Hypro - FoamPro

Maintenance of the 1600 Series System



- **Foam Concentrate Strainer**
 - Cleaned out regularly.
 - When foam pump is running and a little or no foam concentrate is being injected, check for clogged strainer.
 - Always after cleaning strainer purge all air from the foam system.



- **Foam Concentrate Pump Grease**
 - Grease fitting every 8 hours of operations.